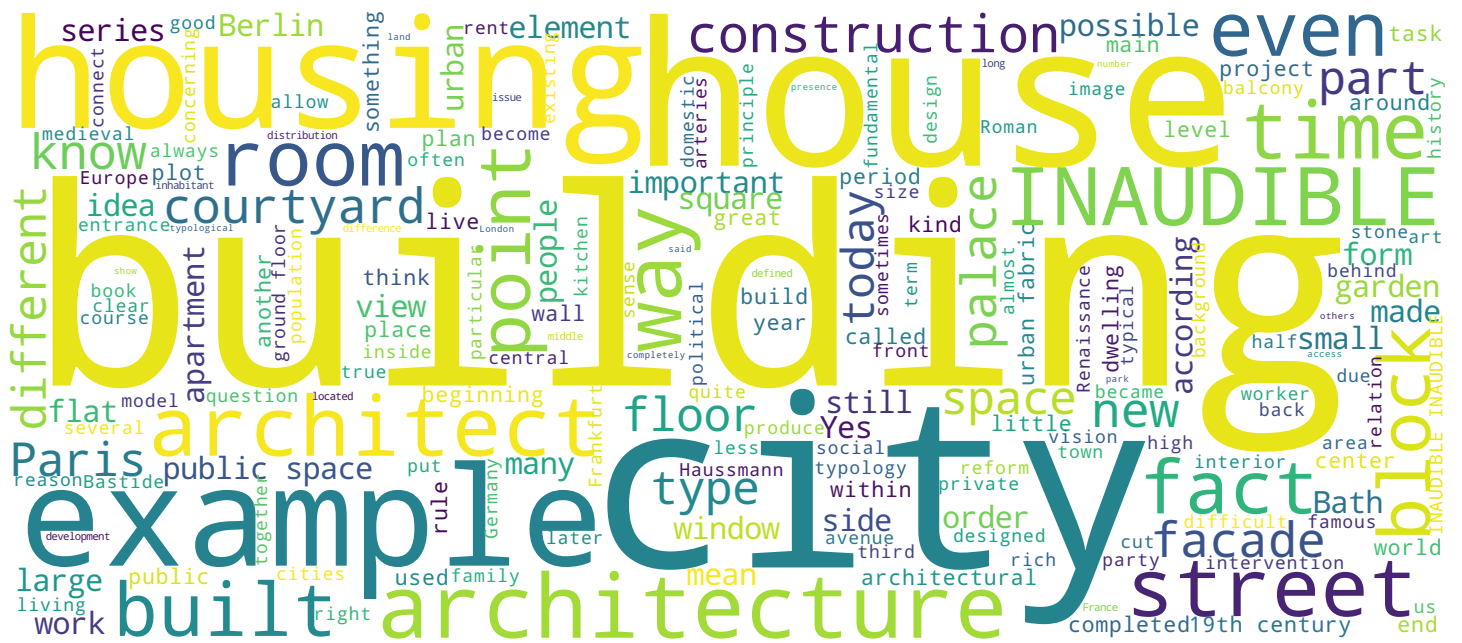


a Housing and Cities course video



EPFL



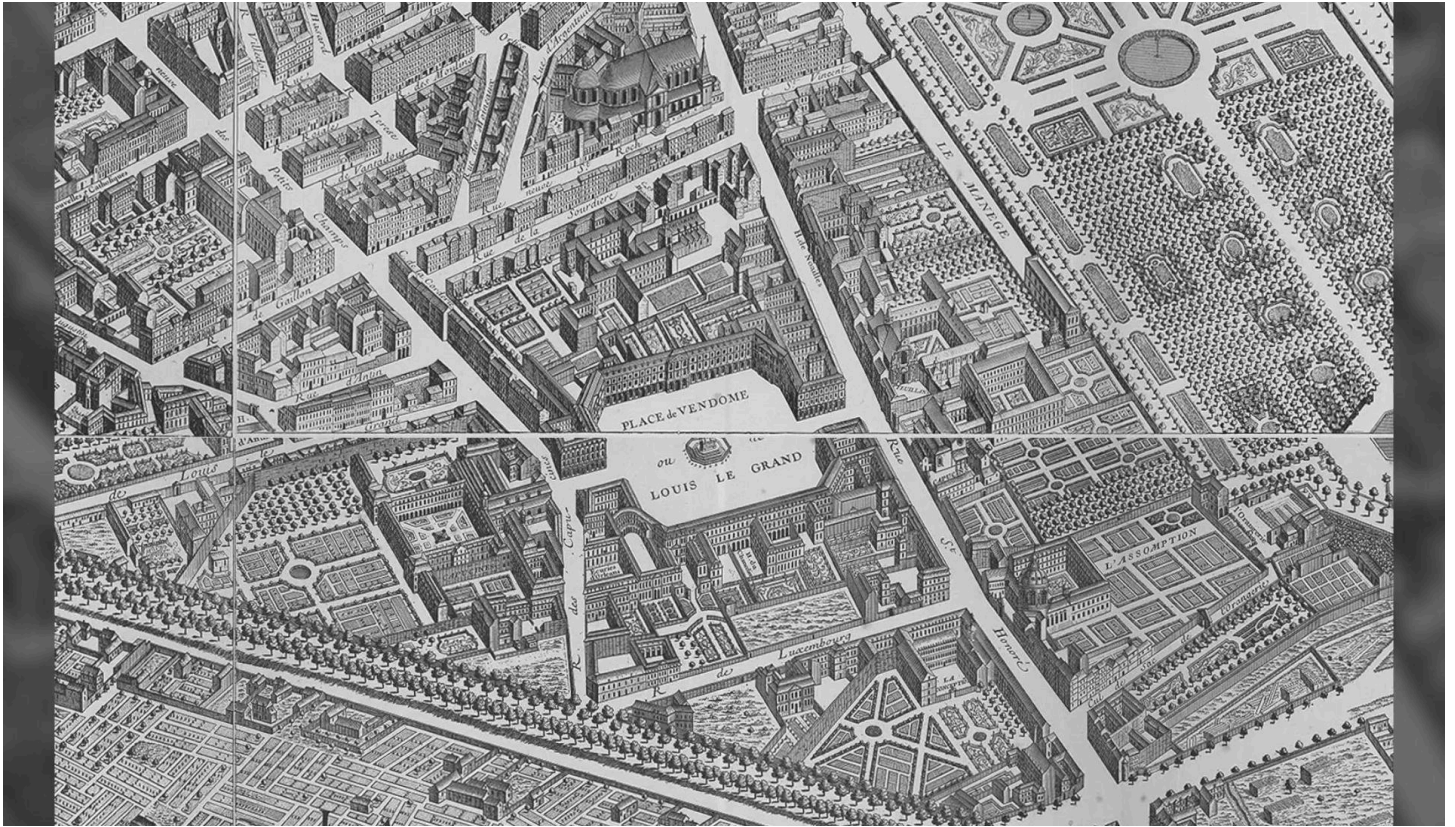
Paris is one of the capital city in Europe but when dealing with a large vision of a modern culture.

Notes

Summary

0m 30s





Paris is the background of a fantastic artistic experiences that we know through literature and cinema and many other forms of art. We have to know that this background is the result of of our powerful vision that due to Napoleon 3 and Baron housemen they wanted to to build the most elegant and modern city in the world. At the beginning of the 19th century the city that emerges from previous periods of revolution and reform is still largely made up of a dense urban fabric inherited from the Middle Ages. In Paris certain isolated real estate projects carried out by the state in collaboration with private investors began to appear. For example the plus fund on the who hired and the gallery.

Notes

Summary



0m 43s



However the nascent question of an integrated vision for Urban Sanitation and modernization wasn't yet resolved until a certain moment. The power is dead and destroyed the urban walls. And in spite of the conservation of the walls the city will know a very important development in terms of population and the built environment. What does it mean if we want to use a contemporary expression. Paris is the typical example of inner densification seduced by the reconstructed city of London.

Notes

Summary



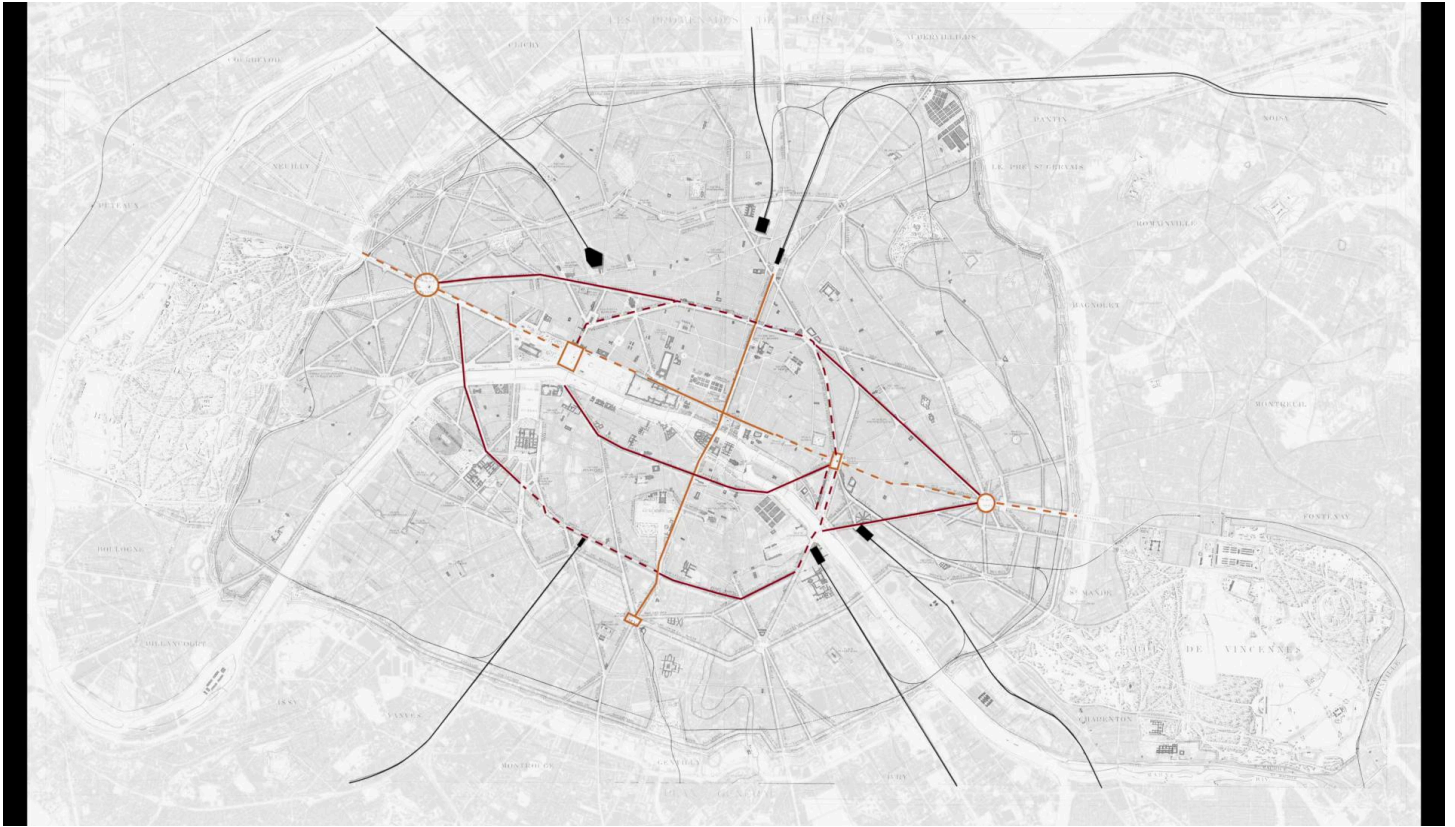


After the fire of 1666 Napoleon the third instigated the renewal of Paris and gave the task of carrying it out to Baron Haussmann prefect of the Seine. Napoleon the third formulated the following instructions: to take every opportunity to organize the placement of the greatest possible number of squares in Paris districts in order to offer generous places of recreation and leisure to all children here rich and poor just as they have in London. Napoleon the third himself sketched out his project for Paris on a map. This was a vision at the scale of France foreshadowing the country's central role in its spatial organization. This project comprised a network of arteries to facilitate traversing the capital with ease.

Notes

Summary





First a crossing formed by the primary East-West access to the river valley and of new deShazo easy and the perpendicular North-South axis of Boulevard Sebastopol secondly concentric boulevards around the crossing made up of three arteries. It also included a series of stations. The six stations around Paris are the interface between the city's Crown traffic arteries and those of the rest of France and Europe.

Notes

Summary

3m 17s





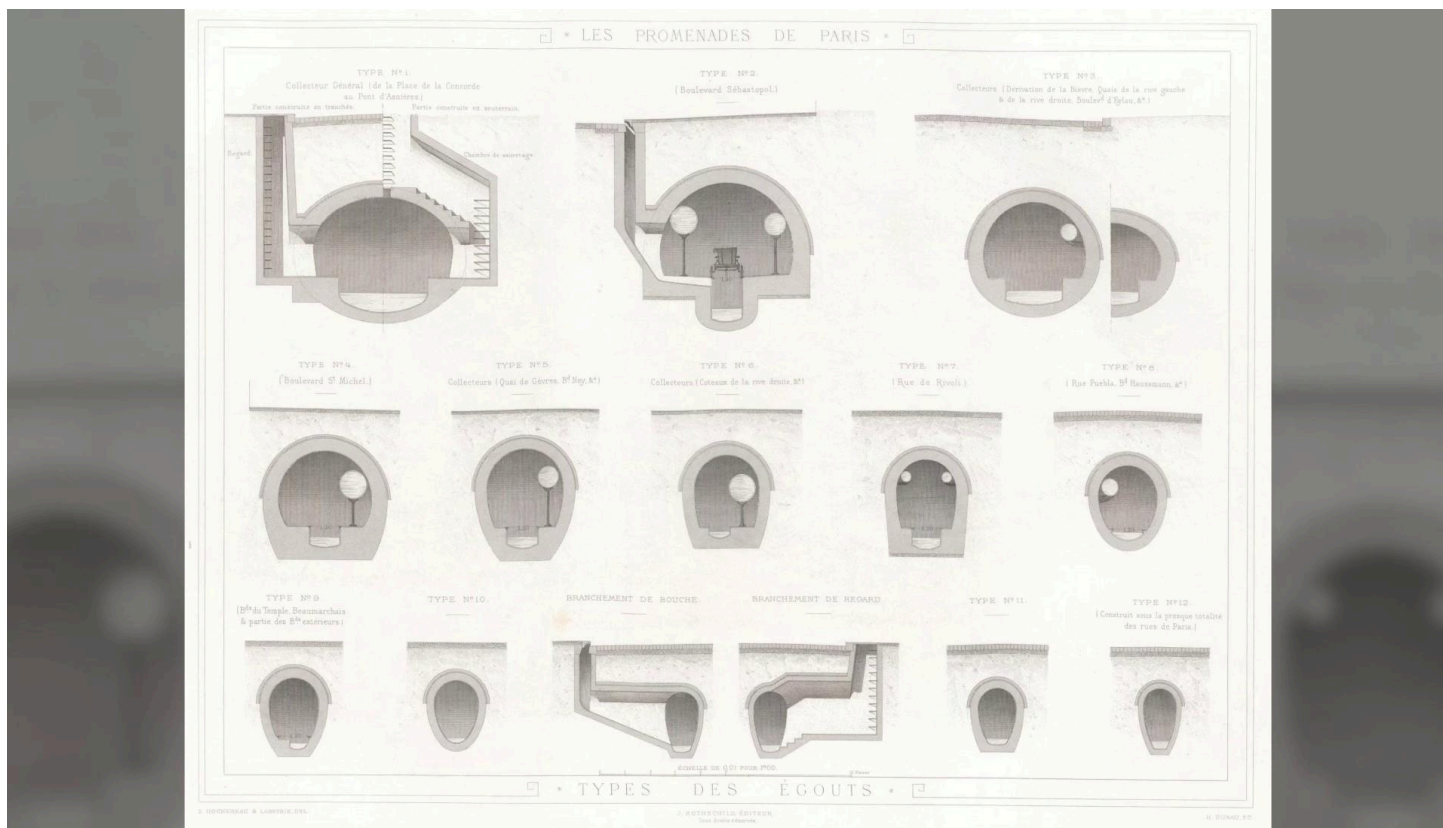
In fact 30 could elect a more or deputy queen. Do you really ought to be tossed from a party you. You a bit more occupied. Yet Downer was also Serb blew up of the party idea. Your leads us you desire to dispel igual. Who is who. But at oxidizer you are weaker with or attitude to the electorate. Please use these bigoted easier. Please doctrine when you urge us to live. We are sweeter or worse. She should or could ABC that she will you know as you eat Bell Darsey faire her triple A array of India crazy Trois Debuchy Martha master the Wikipedia article. What else does Jewboy yet urge Loku. Well you just hit a typical bar at osteopathy youll be forced to post it will you the. So is your bar to not to toss rubbish your daily tape or wipe off to the rails or we are partyless you could ask your partner to visit the party. If you are playing it just wow. You a world what are some of us are supported by degreaser silly party. If you are a deal you've got objectively a rat obviously but he saw it happen either.

Notes

Summary

3m 50s



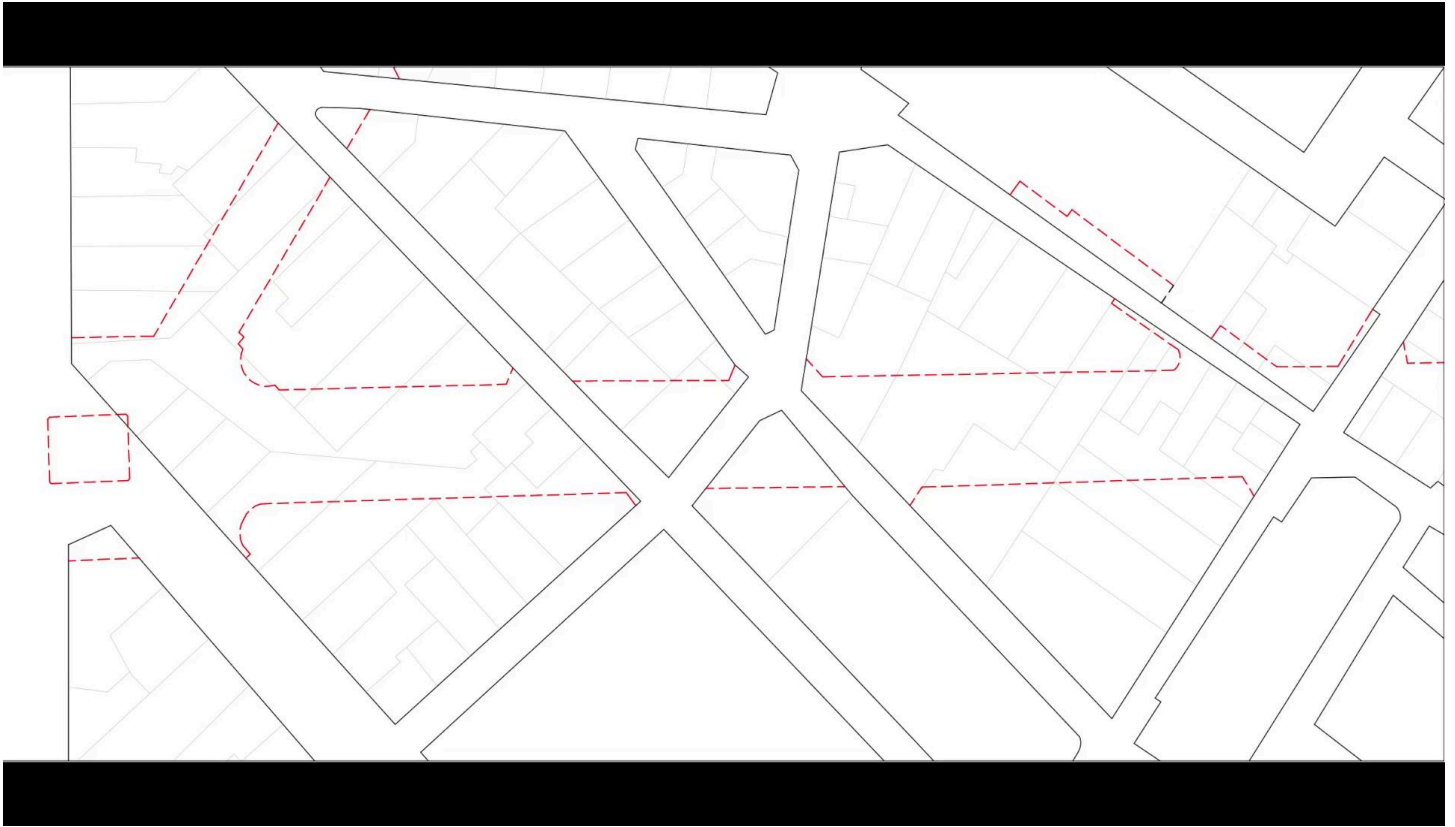


Phacelia the OP as previously mentioned Baron Ossman was named prefect of the sun and given the task of realising this ambitious vision the work already begun by his predecessor Janjic Belgae would be completed by YOSS man through a series of arteries and squares connecting the monuments and facilities of Paris. Both future and existing modern social life developed within this new mesh of public space. No prior plan of the ensemble of these projects was made the first document illustrating the mall was presented on the occasion of the Universal Exhibition of 1889. Even if conducted in an autonomous way each intervention was carried out according to the same criteria of regulation and beautification the rules of the urban landscape were put into place as follows. The infrastructure was built by the public authorities and the buildings by investors of the public sector oarsman had the habit of saying it is not a task of the public authorities to build.

- Notes

Summary





Rather the task of the private sector however the city must prepare the ground for this work. Two major types of interventions on the existing road network and the urban fabric were executed first first their alignment an enlargement consisting of moving back the sites building frontage in order to widen the existing road. The demolition costs were compensated by the increase in value due to the beautification of the street. Secondly the cut in French letter consisting of cutting new street through existing blocks enabling the rapid connection of different parts of the city to throat cuts therefore constructed a new urban landscape in financial terms.

Notes

Summary

6m 41s





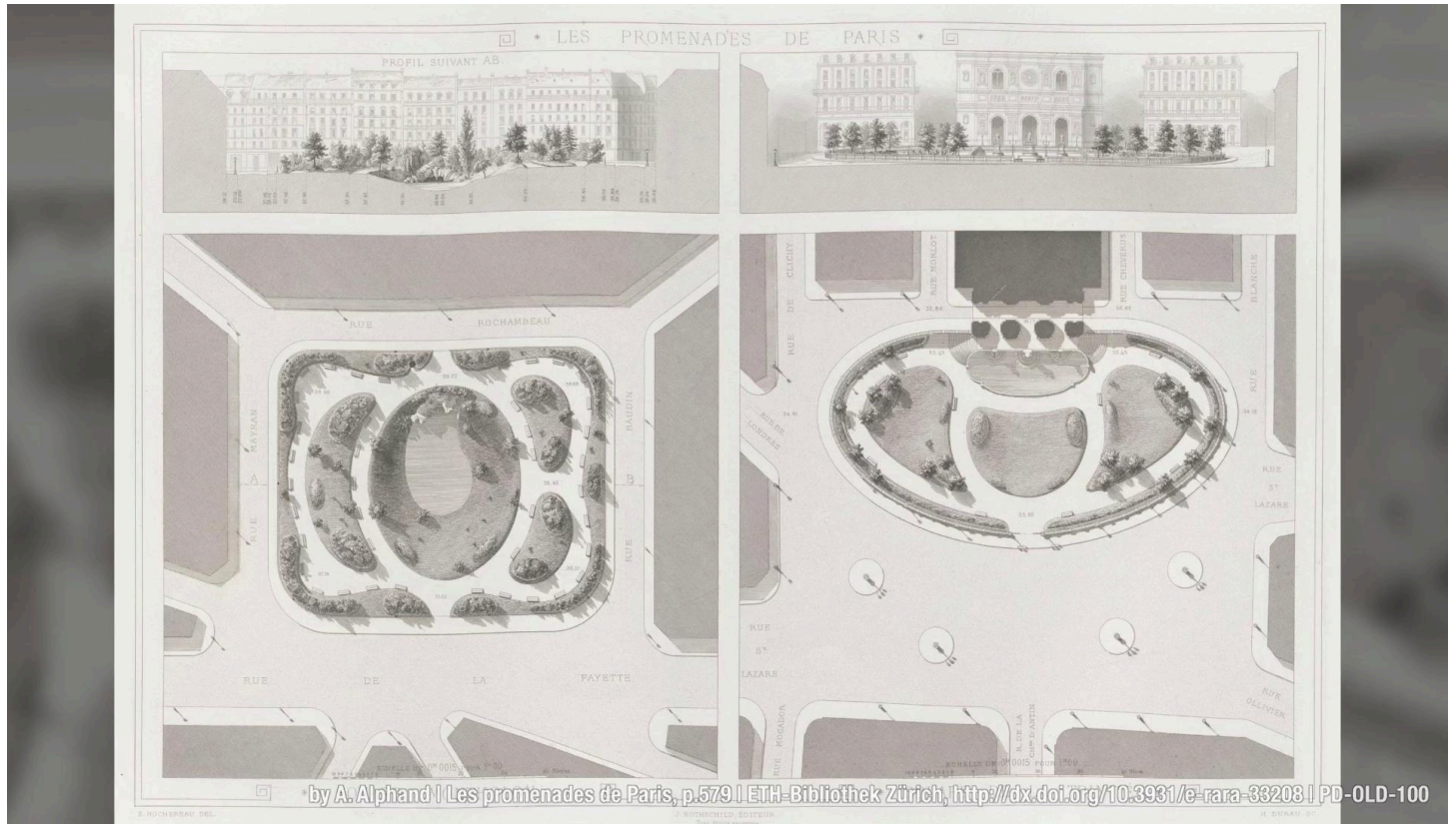
It was easier and less expensive to expropriate sites in the middle of the block than buildings on the street or man explain this principle in the following way because it is more expensive to buy more difficult and more damaging to demolish the facades than to cross the courtyards. The gardens and the park is easier to attack the interior of Apai than the crust. These interventions on the mythology of the public street space were accompanied by sanitation measures and the construction of the underground infrastructure still operational today.

Notes

Summary



7m 29s



The drinking water and drainage networks would later be completed by the gas and electricity networks serving every building following the London image. The mesh of public space was completed by a network of promenades first in the two large words at the entrance to the city the by the building and the Blytheville Sen..

- Notes

Summary





avenue de l'Opéra after intervention

redrawing by LCC/EPFL based the cut for the avenue de l'Opéra, Atlas du Paris Haussmannian, p.147

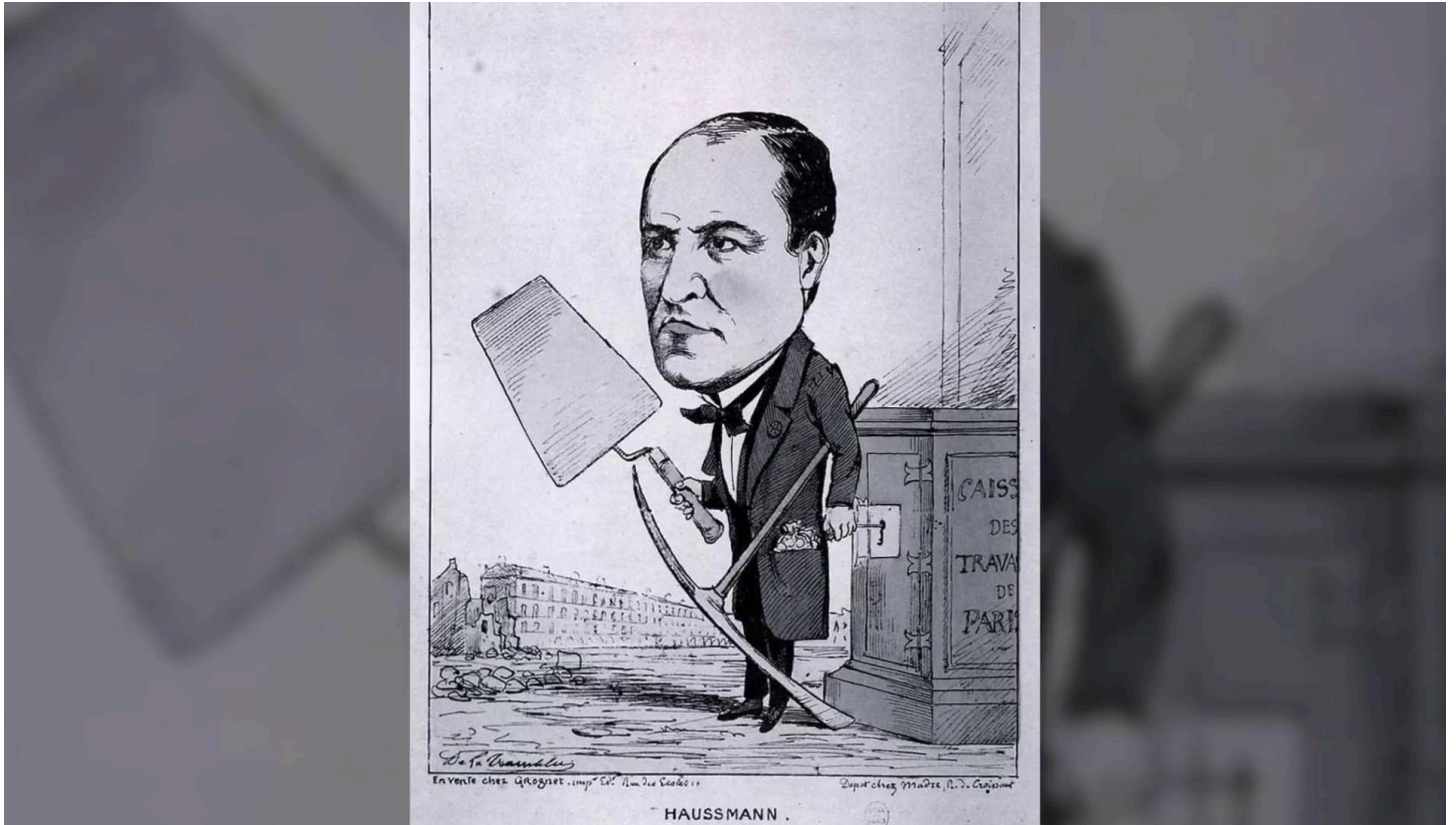
And then at the heart of Paris where a series of parks and squares were connected by planted avenues the public space of the street became a representative place for bourgeois life. Let's look at the construction of the Avenue de la per more closely this cut is an ambitious project that had been planned since 1850. As part of the freeing up of the Louvre and the two free but which wasn't carried out until 1867 after the completion of the opera the intentions of this cutting and clearing were twofold to connect the Hooda equally to the Boulevard oarsman at the level of the Louvre and the theater of Hancey and to clean up the neighborhood around the Louve which was particularly insalubrious. This would be exemplary of the cutting principle comprising three elements a dense urban fabric of small dirty streets a route through the center of the block which connects the theater of Marseilles to the bovver and the neoclassical composition of an iconic building in the axis of the avenue. The needs that a burger is one of the rare access that is not tree lined in order to allow a few of Gaffney's operas.

Notes

Summary



8m 30s



Peristyle and the death of Hancey from all points to carry out this overhaul of Axelsson plots oarsman employed different financial arrangements and laws which enabled him to realize the work without loss in the first period in 17 years. One and a half billion francs worth of work was completed with an initial state budget of one point one billion francs. The city management itself undertook the different tasks of expropriation sanitation infrastructure modernization and construction of the public space. It then resold the improved sites to construction companies. The city therefore acted like a bank the city contracts different tasks to a company and had itself only a staring role the company's received a subvention for the construction of public space. In both cases the work was initiated before the finances were secured in a similar way to private actors. The city took out large loans which in the case of oarsman were criticized by June 30 who wrote the series of articles appearing in the journal da satirically entitled Weissman's fantastic accounts and Susie E..

Notes

Summary



9m 53s



She is all but dead you guys do Eastick cities he says he's sure they're
Parcell dorks are too deep on love BFC gear but it all to do exclusive
BFC in a low of Wahhab.

Notes

Summary

11m 14s





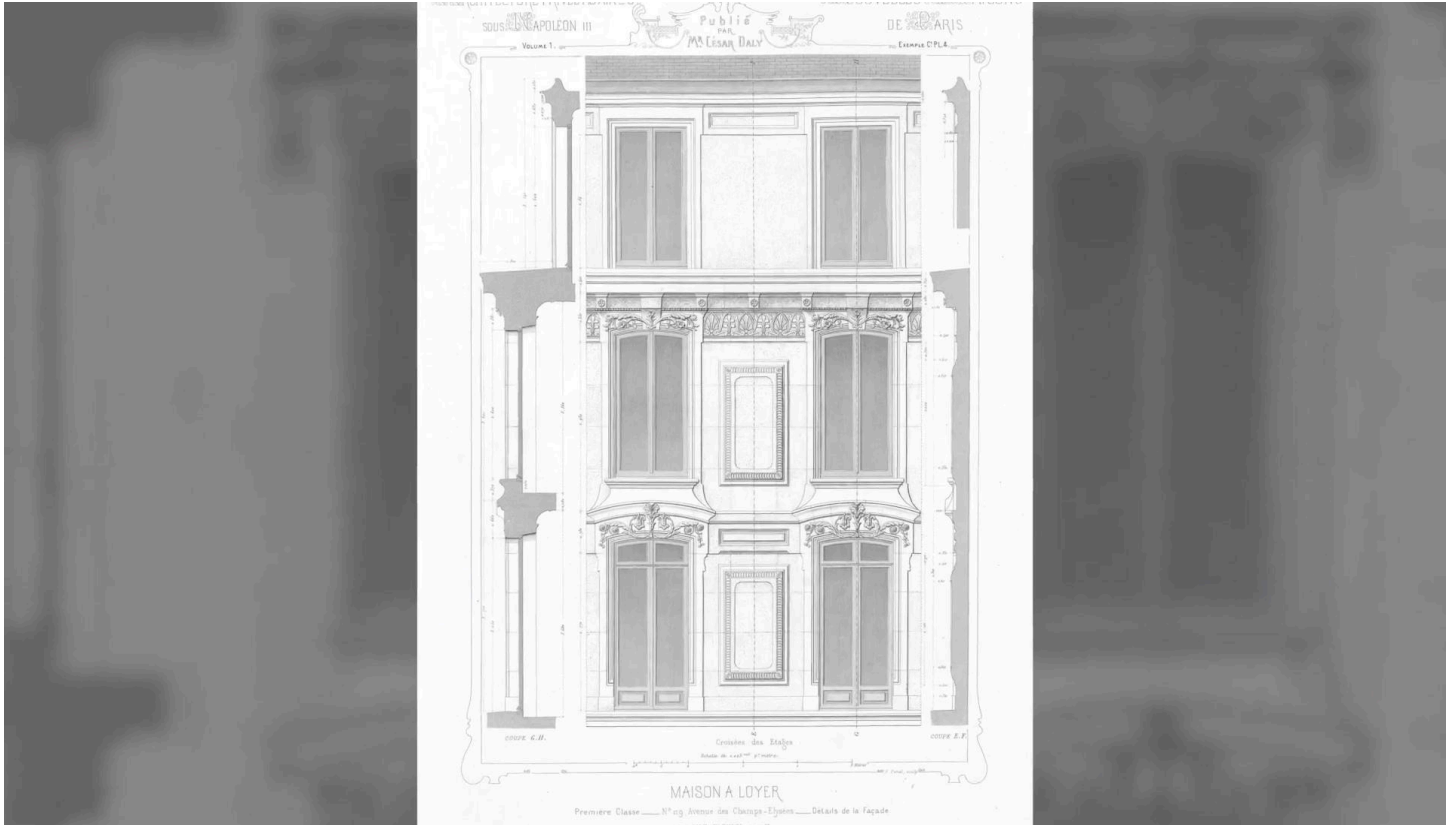
Although the history of what ought to be al Qaeda although the Disu feebler I swear to you you saw it sir. I see FIESER offered to ridicule. Bah. Q Why were they so it's you who read between they got them give whatever you feel like you have ignored dudes word is not accurately preserved. Q Do you have for the pilot. FC is Hagle Sargol the best. I support what I see is you people pussy he caught them this ridiculous. The different cutting and regulatory interventions to the urban space caused significant clutter modifications some of which were more important than others. The geometry of the plots which was derived solely from these interventions and was never regular resulted in a series of geometric strategies which normalized the apartment floor plans as we see here. Plots were sold by the city administration or by companies. Buildings became a source of profit and investment and the private city mansion was superseded by the investment property.

Notes

Summary

11m 30s





Let's return to the aesthetics of the street until the Second Empire no legislation regarding building regulations existed although a man attended little to the Organization of the buildings themselves introduced clauses defining aesthetic rules for the facades until the sales contract as follows. Ossman wrote in a circular on the 5th of October 1855 clause that obliges the buyer to give the building facade the same principal lines as those of the block. In such a way that the balcony's continue and where possible the cornices and grooves on the same level.

Notes

Summary

12m 40s





Piece by piece a background of homogenous public space was constructed composed of different facades but responding to the same rules of rhythm. The facades were in cuts down which often came from urban underground quarries.

Notes

Summary



13m 22s



The hierarchy of floors was translated through ornaments such as moldings and cornices and through the window and balcony definition. Thus the ground floor is for commercial use. The Mezzanine is a modest floor without a balcony. The first floor the noble floor is defined by a long balcony which reappears on the fifth floor crowning the building and offering an unobstructed view with fresh air instead of a balcony. The other floors have windows with a low skill and railing. The building is no longer the image of an individual house an autonomous object but a continuous ordering element which defines the block and the street.

Notes

Summary

13m 34s

