

**EPFL**

# H0 Lenses in COSMOGRAIL's Wellspring

COSmological  
MONitoring  
GRAvitational  
Lenses



No transcripts available for this video

Notes

Summary



0m 03s



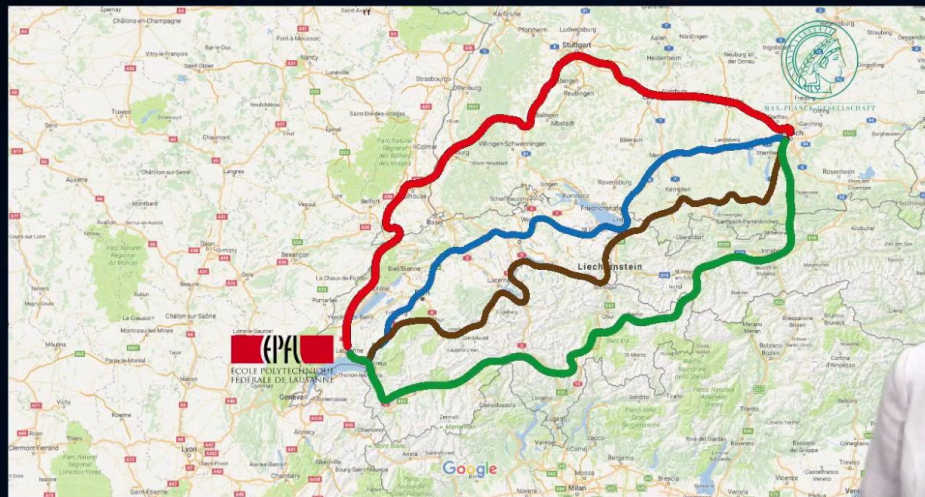
\_\_\_\_\_

Notes

Summary







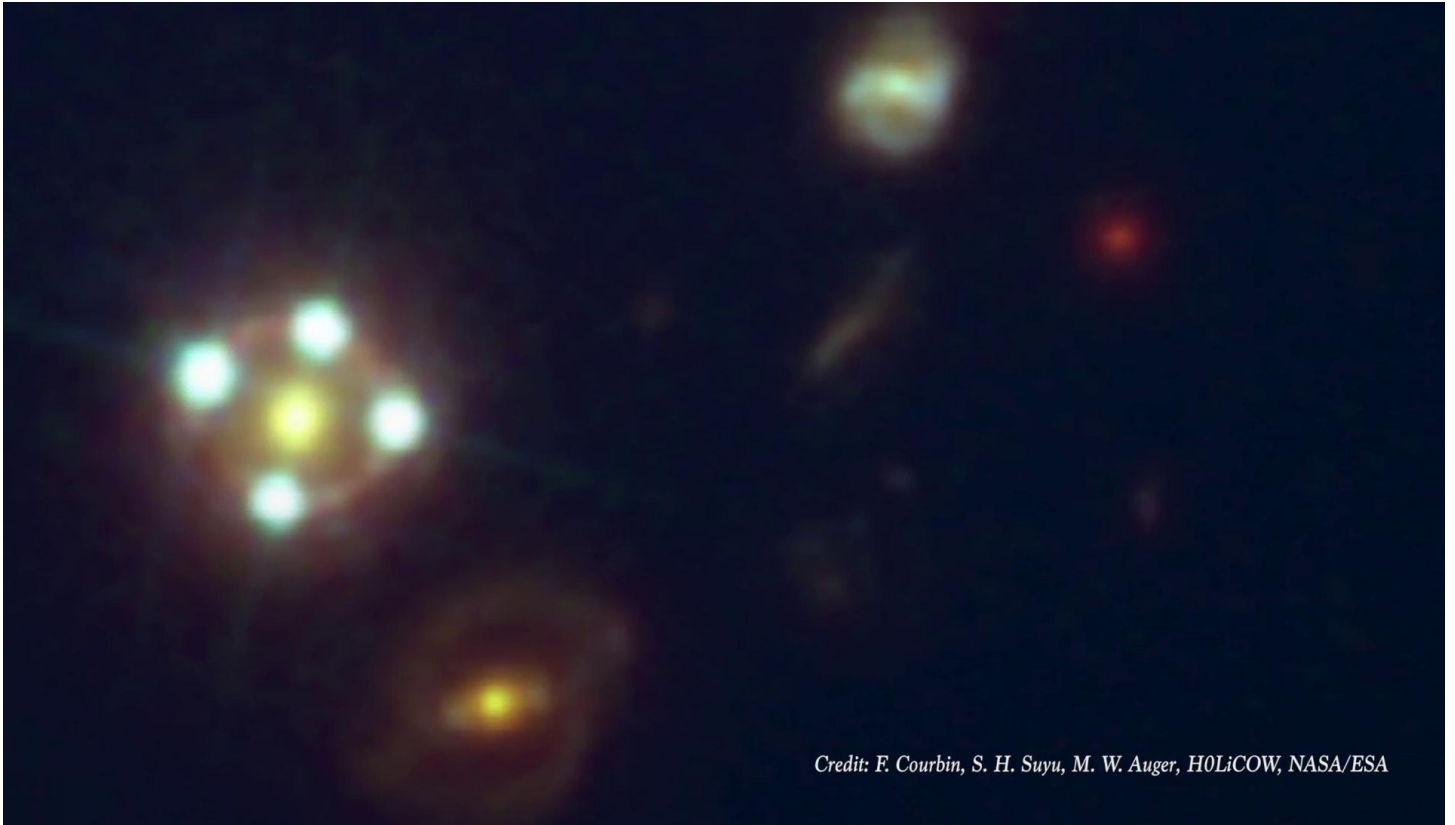
- Notes

## Summary







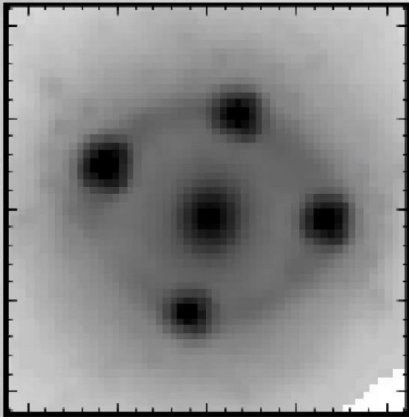


Notes

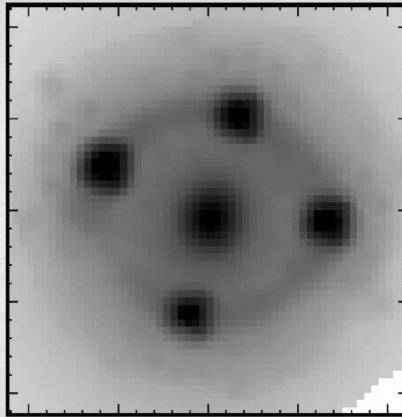
Summary



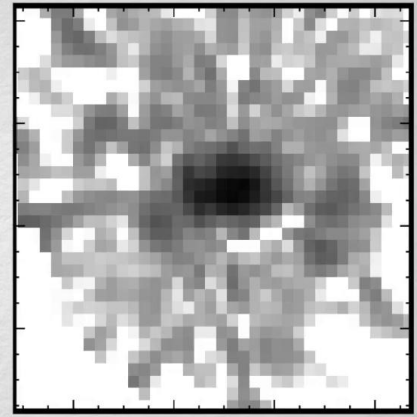
Observations



Numerical model



Reconstructed source



Credits: H0LiCOW Paper IV (Wong et al. 2017)

Notes

Summary




2m 39s





[illegible]



Summary



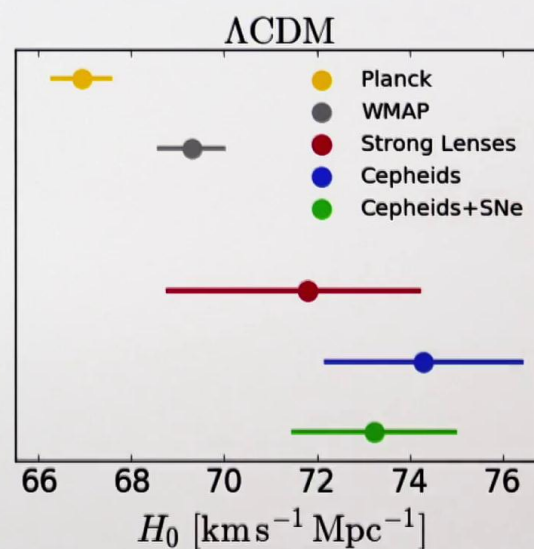
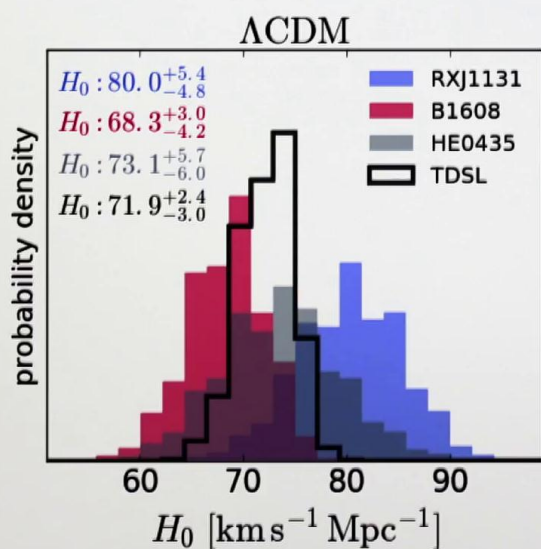
3m 04s











Credit: H0LiCOW Paper V (Bonvin et al. 2017)

Credit: V. Bonvin - H0LiCOW

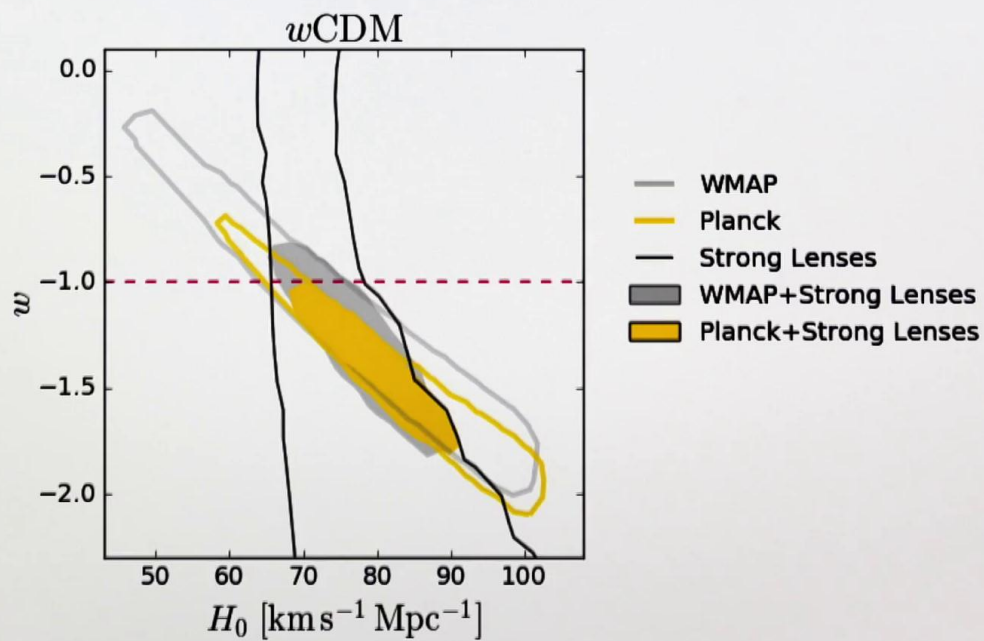
Notes

Summary



5m 12s





Credit: V. Bonvin - H0LiCOW

Notes

Summary

5m 58s






\_\_\_\_\_

[illegible]

Summary





H<sub>0</sub> Lenses in COSMOGRAIL's Wellspring

H0LiCOW V. New COSMOGRAIL time delays of  
HE0435-1223:  $H_0$  to 3.8% precision from strong lensing in a  
flat  $\Lambda$ CDM model (Bonvin et al. 2017)

A. Agnello (ESO),  
M.W. Auger (IoA Cambridge),  
R.D. Blandford (KIPAC),  
V. Bonvin (EPFL),  
G.C.-F. Chen (UC Davis),  
T. Collett (ICG Portsmouth),  
F. Courbin (EPFL), X. Ding (UCLA),  
C.D. Fassnacht (UC Davis),  
S. Hilbert (LMU/ECU),  
L.V.E. Koopmans (KAI), K. Liao (UCLA),  
P.J. Marshall (KIPAC), G. Meylan (EPFL),  
N. Rumbaugh (UC Davis),  
C.E. Rusu (UC Davis),  
D. Sluse (STAR Institute),  
Spiniello (INAF-OAC/MPA), A. Sonnenfeld  
(Kavli IPMU), M. Tewes (Alfa),  
T. Treu (UCLA), O. Tihhonova (EPFL),  
K.C. Wong (NAOJ),  
A. Yıldırım (MPA)

*Special thanks to: CEDE at the EPFL, Lauren Huang (ASIAA), Yin-Chih Tsai (ASIAA) for the recording and editing.*

- Notes[illegible]

## Summary

Summary



